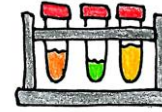


HARD WORKING AND SMART,
NOTHING ELSE DEFINES A SCIENTIST.



Our Superpower
is You!





SUPERHEROES in SCIENCE

Word Search Puzzle

Superheroes in Science Achievements

ALAN TURING	Developed a machine that helped break the German Enigma code
FLORENCE NIGHTINGALE	Founder of modern nursing and Hospital Epidemiology
NEIL DIVINE	Major contributor in modern understanding of star formation
SALLY RIDE	First American Astronaut in space
GEORGE WASHINGTON CARVER	Revolutionized the agricultural economy
ERNEST EVERETT JUST	Pioneered work in cytology and embryology
STEPHEN HAWKING	Pioneered studies of black holes, relativity and quantum gravity
EDWIN KREBS	Discovered reversible protein phosphorylation
ALBERT EINSTEIN	Revolutionized understanding of space, time, gravity, universe
CHARLES DARWIN	Developed the theory of Natural Selection
SHIRLEY ANN JACKSON	Fostered development of advanced telecommunication systems
CHIEN SHIUNG WU	Pioneer in the field of nuclear physics
LISE MEITNER	Co-discovered nuclear fission
MARY ANNING	Made most well known discoveries in paleontological history
JANE GOODALL	Revolutionized the field of primatology
MICHAEL FARADAY	Discovered electromagnetic induction



N S A R L N K F P F E P M L U J O X C Z N A S U X
 A Q T E Y D E J J D S A M Q A O S H B R J G F W X
 I L W E O A S I W S R V W K V T A F F K E Q G G G
 V W B I P Z D I L Y Z P O I C R F I M O N D X N V
 M U P E W H N A A D H Y T V L J C I R F H K N U R
 B O S G R K E N R V I D W E Q M A G S T V A I I O
 E N H I R T N N I A D V S N P S E P Q S F F J H X
 X Y B E I I E F H M F D I A W W U I Y U U I F S M
 O T B D N I O I E A A L K N A K S C S J Y D J N S
 N S T G Q V U D N R W L E S E H E S R T Z R J E T
 F B F M H J I E W S H K H A I J Y Z E T G K H I D
 O F S I U R K I R D T I I R H S B W N E D C A H A
 D C C M Y R N R Y O N E L N J C W E T R T R G C I
 N W G L O J Y O J G E E I A G F I X I E Y N A G H
 W E L S I S Y L T H Y Q N N A D P M E V S W Q D J
 Y A B E N B G O C A A E P O Y Y M N M E F U H P T
 S X A M F P N V N L G M A B H V D L E T X S N J B
 X L K X N C C N A O D Z A T C N K V S S J K W J D
 F M U N A O J N O E S U R D I U F C I E U M J K V
 V E T R V A T D B B O Z Y T Q R N H L N Q I W H H
 H L V T C U A S X F Q R G N C S O V R R T J Y A R
 O E J K R L S U A A F L B Y F E S R K E Z Q K B S
 R R S I L F L O R E N C E N I G H T I N G A L E V
 G O N Y R X D A F B P G A M Y K H Y D N K N Y X Z
 N G T R M X D A D A S Z R O W G R I R Y V T B D M

**There is not much in common among these inspirational people, no colour, no gender, no physical ability.
 Hard working and smart, nothing else defines a scientist. A scientist is someone like you!**